

BOLD VISION

NEWSLETTER AND FUNDRAISING APPEAL



ISSUE # 2 JUNE 2010



FIRST PHASE OF NEW COMMUNITY SPACE TO OPEN!

Following eight months of fundraising, volunteering, digging, painting, and visioning, the first phase of our new community café space is to open on **SUNDAY 18th JULY**.

The opening coincides with the national 'Big Lunch' picnic day. So we're closing off the top of Kitto Road for a street party to celebrate the completion and opening of Phase 1.



Come along from 12noon onwards with a picnic and food to share. There'll be children's art activities, live music from Kat Drake, the Little Devils and others and a chance to see the new community café and meeting space. (Drinks from the café.)

The winning entry in our competition to name the new community café was **'The Hill Station'**. Read on to find out what this new space will have in store for you and how you can join others to support the next phase of our vision. → →

WE STILL NEED MORE BOLD BACKERS !

“A superb way to invest in my community”



Bold Vision’s aim is to create a thriving, inspiring, centre for the area, supported by local people and St Catherine’s Church. To do this we’ve established a Social Enterprise Company and have now applied for charitable status so we can apply for larger grants.

Our first project is to transform the undercroft space underneath the Telegraph Hill centre into a wonderful café, small shop, exhibition and community meeting space.

So far over 50 local people have become Bold Backers of this project either with a one-off gift or through regular giving via a Standing Order. In just 8 months we’ve raised just over £35K, approximately one third of the total amount needed (£90K). This is enough to open half of the space and establish a self-built basic café project. However, our full vision is to transform the full 140sqm space to run a quality café, meeting space, gallery, shop and possibly even a unique ‘food centre’, where people can come to cook and learn from each other and run courses.

One local Bold Backer told us: *“This area has been crying out for a high quality café and community work space for years. As someone who intends to live here for the next 10 years I feel this is a superb way to invest in my community and see this vision become a reality.”*

If you’ve thought of becoming a Bold Backer but haven’t got around to it there’s still a chance for you to sign up to this unique venture and support Phases 2 and 3. You can give online at www.boldvision.org.uk using credit or debit cards or PayPal, or set up a monthly Standing Order for 12 months via :

Bank: Co-operative Bank
Branch: PO Box 250, Delf House, Southway, Skelmersdale WN8 6WT
Account name: Bold Vision
Account number: 65371538
Sort code: 08-92-99



✂.....

Name..... (to appear on the BB certificates)

Address.....

Email:(Please print clearly!)

Yes put me on the E-mailing list

Yes, I would love to be a Bold Backer and want to:

- Invest with a cheque of £200 made out to ‘BOLD VISION’
- Start a BB account and give £.....with the rest pledged in installments when I can, or through volunteering.
- Give a smaller amountor help in other ways eg sponsored activity.

WHEN COMPLETE DETACH AND PLACE IN AN ENVELOPE AND SEND TO

**Julia Carley (BV Treasurer) at 92B Gellatly Road, SE14 5TT or
Stephen Carrick-Davies (Chair of fundraising sub group) at 26, Musgrove Road , SE14 5PW.**

BV values all support and offers of help and all donations will be acknowledged with a written receipt stating data protection reassurances and a certificate. Donors will be kept in touch with how the fundraising is going.

MEET THE MANAGER

Ian Convery has lived on the Hill for over 15 years. As one of the founding members of the Green Street Community self-build housing he knows just how important it is to work with local people; and that's just what he loves about this project.

As an experienced chef, Ian has many years working in cafes including the Deptford Deli, the Brockley Mess, and even the Wibbly Wobbly floating café.



Ian says: ***"I love this Bold Vision project because it's about a group of local people investing in a space for everyone. The Hill Station is going to be so much more than just a café. I'm keen to show people how good quality food and a welcoming, accessible space can bring people together. We want this space to be somewhere for us to meet and share our ideas and passion. In that regard, I see my role as a community facilitator and a cog in the machine rather than the Manager."*** Ian will be running the café for the first phase with a proportion of profit made ploughed back into Phases 2 and 3.

THE TASTE OF THINGS TO COME: CONCERTS, QUIZZES, FOOTBALL



Over the last eight months we've run a number of BV awareness and fundraising events including a gala concert, quiz night, classical concert and football tournament. Hundreds of local people have caught the vision and helped us raise the funds. On the hottest day of the year so far 80 children from local schools took part in the Bold Vision football tournament. ***"It will be great to be able to get a drink in the new café"*** said one of the future England players.

Further community events are planned including a special 'Theatre of the Oppressed' workshop on 10th July and a community panto next November. See www.boldvision.org.uk for details. If you would like to put on a community event in aid of Bold Vision do let us know.

THE WORK IN PHASES. In our first newsletter we said we needed £80K to complete the work, and we still do (although with VAT this figure is nearer £90K). However instead of just waiting until we secured all the funding we've broken up the work into 3 phases. **PHASE 1** has involved installing the thermal floor, walls, and utilities, and using volunteer labour to construct a basic café counter and exhibition space. This has cost approx £35K, which we've almost raised from local people, businesses and the Mayor's Fund (£10K). As soon as we secure this final funding we will start on Phases 2 and 3.

PHASE 2 *"FOR THIS RELIEF MUCH THANKS"* Hamlet Act 1

Phase 2 will see the installation of accessible toilets, baby changing facilities and a storage area. This is vital if we are to extend the types of activities which can be run at **The Hill Station**. John Knepler, Chair of Bold Vision and architect for the project, estimates that to install the drains, new floor and toilet facilities will cost £9K. So if you can help us turn 'Pounds into Pees' use the form on the back of this newsletter and make a donation. If there is someone out there who would love a commemorative plaque on their own special community space let us know!

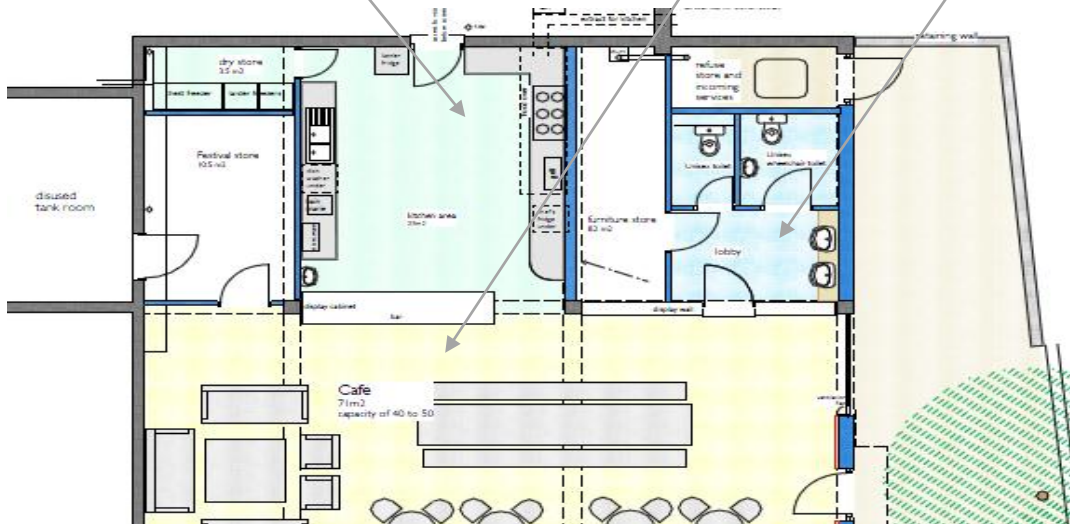


PHASE 3 Phase 3 will involve construction of a larger kitchen and food area where we can run courses and functions, and wider community events (see plan below). In order to help us raise this further funding we're in the process of registering Bold Vision as a charity and have submitted funding applications, including one for £50K to the National 'People's Millions' fund. We believe that funders will be impressed that we've raised £35K from the local community already.



If you would like to help with the fundraising or have ideas of who else we could ask to support this exciting community development please join the Fundraising Sub Committee.

See website for full details.



PAINT PARTY & COMMUNITY BBQ

To help us complete Phase 1 of *The Hill Station* we're holding a final work party on **SATURDAY 19TH JUNE 10-6PM**. Come along to help paint, clean up and get ready for the opening. Bring tools, brushes and brooms etc. We'll finish with a **Community BBQ** at 5pm so bring something to throw on the barbie and a bottle to share. There may even be puddings !

